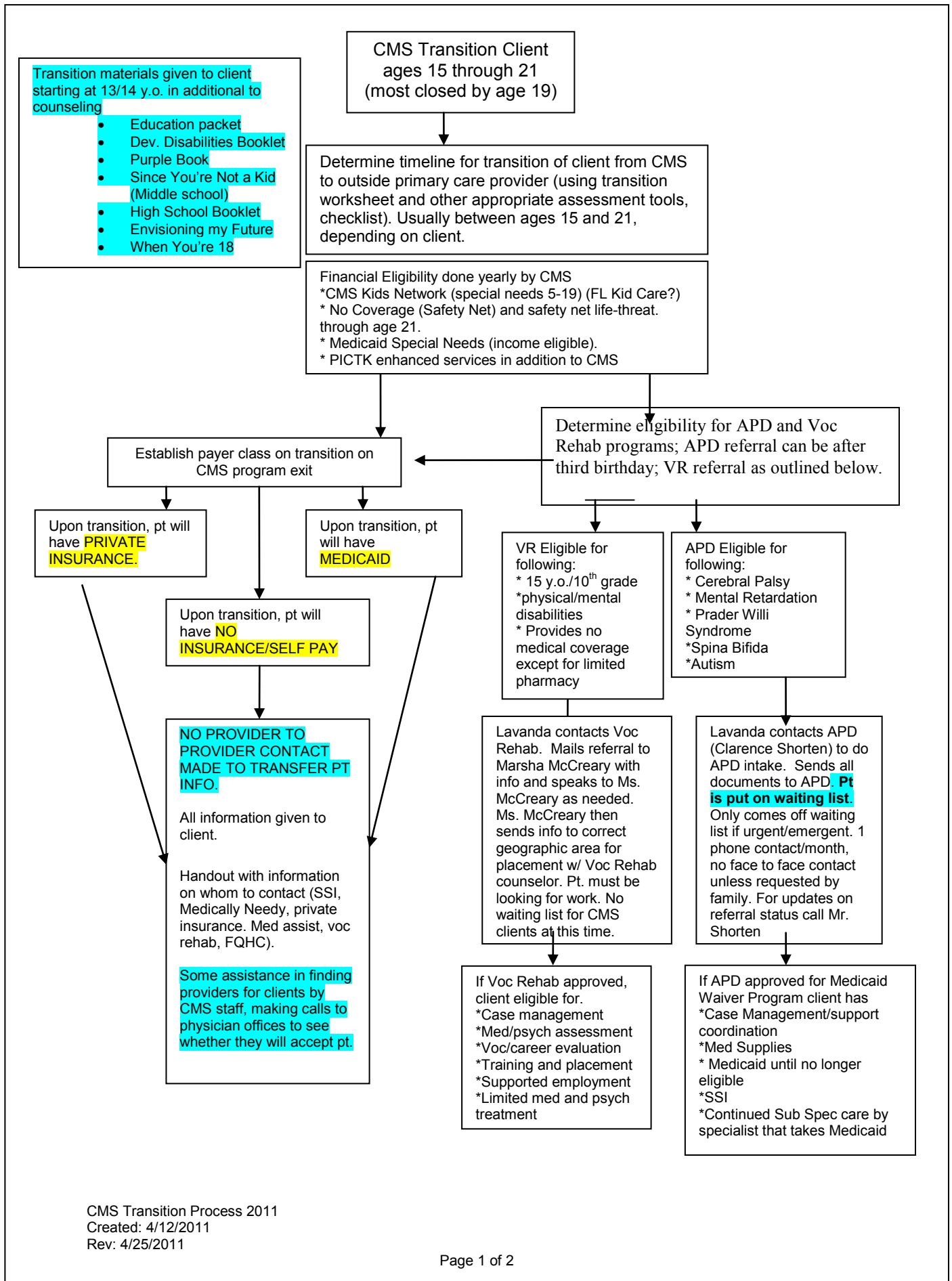


CMS Transition Process 2011



CMS Transition Process 2011

Additional Notes on Current Transition Process:

- Half of CMS case load is mental health (ADHD largest group)
- 600+ kids in CMS network under Florida Kid Care (special needs).
- Every year, clinical eligibility is done by CMS Nurse CM and some sort of age appropriate transition counseling is done.
- Nurse Managers help find primary care providers (give handout)
- If transition client is hospitalized, they will see in house specialist. Assume that inpatient social workers assist in discharge planning.
- ARC and other service providers are struggling because their clients are stuck on waiting list and can only get referrals through Voc Rehab.
- **Long waiting lists for both APD and Voc Rehab.** Only get on APD/Medicaid Waiver list if emergent situation. Non Med Waiver/Monthly telephone contact with client, no face to face.
- Lack of providers to take uninsured clients. Limited number will take Medicaid but many need office approval. Have current listing.

Suggestions for additions to transition processes:

- Health Navigators at SHH ER and BH ER can assist client in ER diversion to appropriate primary care home (ECC or SRCC).
- Add additional providers and social service agencies to HATS website resource guide (model after Bay County providers).
- Determine if physicians can be added to HATS site without calling individual offices.
- Look at Electronic transmission of client information via CHIN community module.

Additional Contacts:

- Janice George (469-3456). Access Behavioral Health Services...takes all mental health kids. Have monthly meetings to figure out barriers and gaps for all counties.
- Denise Adams to get additional physician providers names to put on HATS website. To contact Dr. Blanchard and Dr. Hunt.
- Contact Chandra Ryan and Anges at ECC to discuss Case Management/Service Coordination available for these CMS transition clients.
- Developmental Disabilities Council – Deborah Dowd Contact Melissa Poe with Esc Co School District to see what transition information is being handed out in ESE classes.
- Work with 211 to determine what agencies can be added to HATS resource directory (Rita Icenogle).