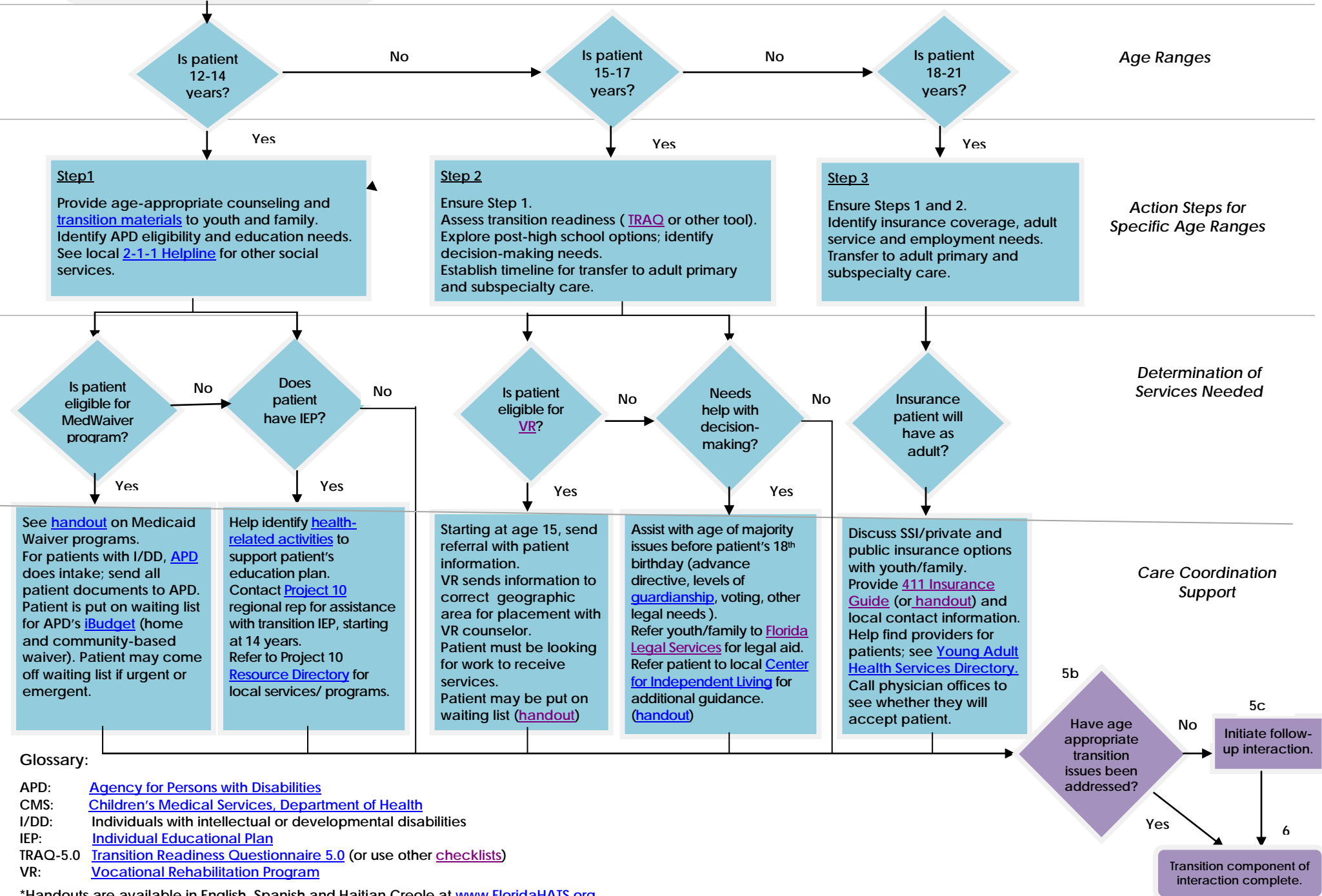


5a

Incorporate transition planning in chronic care management. Coordinate with CMS Nurse if patient is enrolled in [CMS](#).

Health Care Transition Preparation for Youth and Young Adults with Special Health Care Needs in Florida



Glossary:

- APD: [Agency for Persons with Disabilities](#)
- CMS: [Children's Medical Services, Department of Health](#)
- I/DD: Individuals with intellectual or developmental disabilities
- IEP: [Individual Educational Plan](#)
- TRAQ-5.0 [Transition Readiness Questionnaire 5.0](#) (or use other [checklists](#))
- VR: [Vocational Rehabilitation Program](#)

*Handouts are available in English, Spanish and Haitian Creole at www.FloridaHATS.org